

SRIXON®

SRIXON
1

STAR TOUR

PRODUCT MANUAL

TOUR PERFORMANCE FOR LESS-THAN-TOUR SWING SPEEDS

You don't have to swing as fast as a tour pro to get the benefits associated with playing a tour ball. We've calibrated our all-new Q-STAR TOUR to fit your moderate swing speed.

It has the distance you need to get ahead of your competition and greenside spin to attack tough pins. It's also soft thanks to lower compression, so you don't need the swing of a titan to make it work.



SRIXON

**SWING
YOUR
SWING**

Q-STAR TOUR

It's already plenty fast. You don't need to dial it up just to experience the benefits of a tour ball. We calibrated the Q-STAR TOUR for moderate swing speeds and didn't leave out any of our tour tech. FastLayer gives it bark off the tee and SeRM's elastic grip gives it plenty of bite around the green. The Q-STAR TOUR - from Srixon.

SRIXON.COM

**THE ALL-NEW
Q-STAR TOUR**

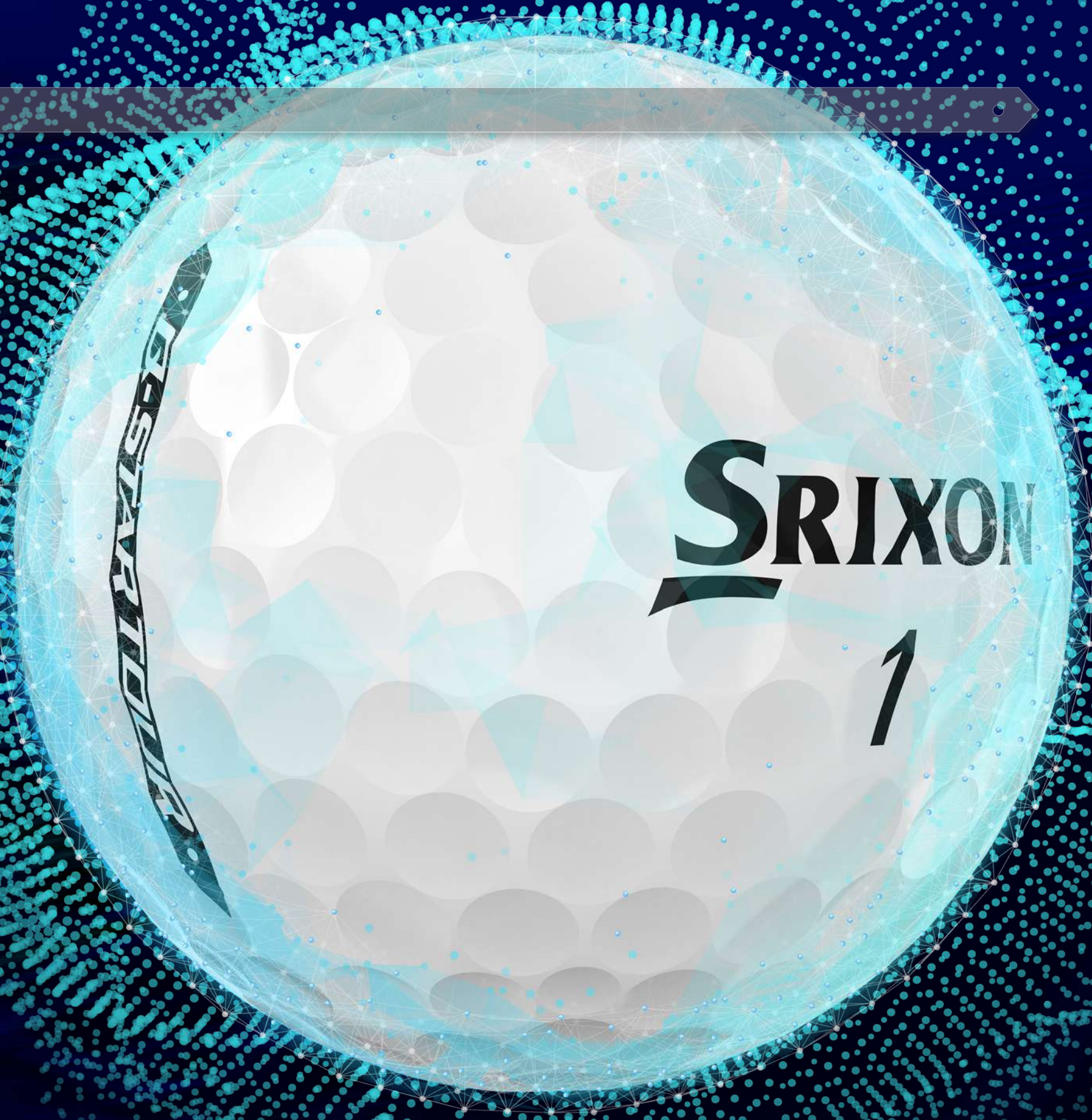


The new Q-STAR Tour is offered in Pure White and Tour Yellow.

TOUR-CALIBER COVER

SeRM REVOLUTION

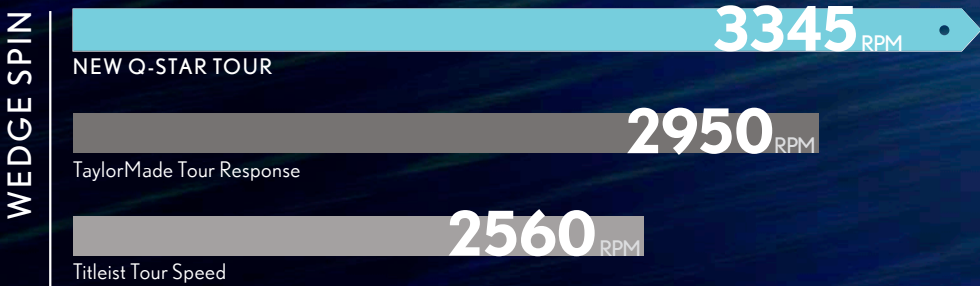
Tour performance starts around the green: the pros demand world-class spin and stopping power. Q-STAR TOUR delivers with an ultra-thin, premium urethane cover that's coated in Slide Ring Material (SeRM).



THE SPIN REVOLUTION CONTINUES

Spin Skin with SeRM is a proprietary golf ball coating developed by Srixon. The coating enhances spin at an atomic level because its molecules are bonded together using moveable cross-links. These cross-links work like microscopic pulleys and ropes, distributing loads evenly among the molecular chains that are the building blocks of Q-STAR TOUR's urethane cover. That even distribution of shearing force makes the urethane cover incredibly elastic. So elastic, in fact, that it expands into your wedge and iron grooves at impact.

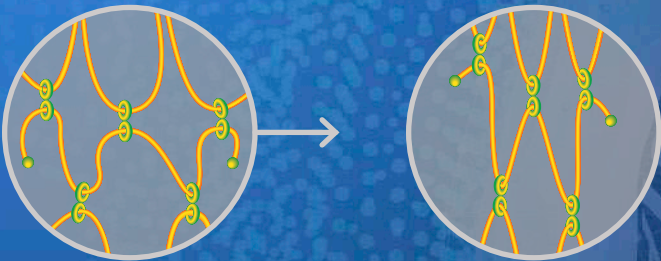
That added bite increases friction on all your approach shots. And that extra friction means more spin and more control every time you hit into the green.



Results based on robotic test, commissioned by Srixon. A 58° wedge was used with each ball at a 36mph head speed.

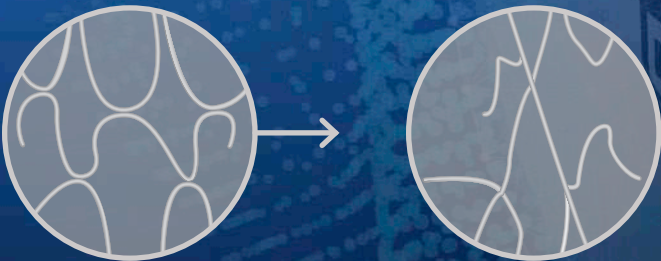
SeRM's MOLECULE NETWORK CONSTRUCTION

spinskin[™]
with SeRM



Moveable cross-links distribute force evenly to avoid breakage.

GENERAL MOLECULE NETWORK CONSTRUCTION



Fixed cross-links can't distribute loads, so weak points break under stress.

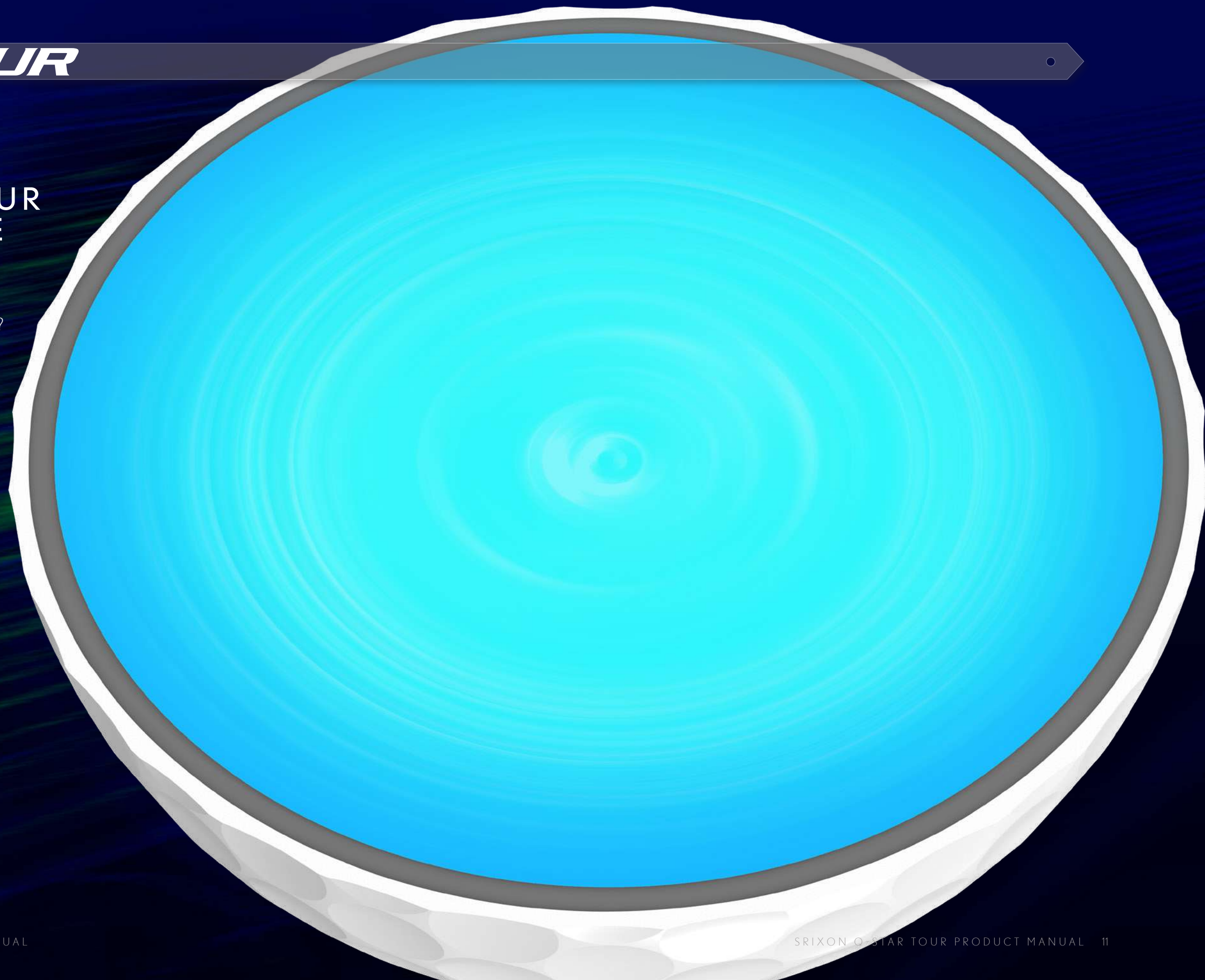
OUR SOFTEST CORE WITH TOUR PERFORMANCE

FASTLAYER CORE

How can you fit tour distance and exceptionally soft feel into a single golf ball? FastLayer.

We start with the core of the core. Then, we add the layers. Thousands of them. Until we've built a core that's firm enough to deliver the explosive distance you expect, yet soft enough for feel you never thought possible in a tour ball.

FEATURING
FASTLAYER

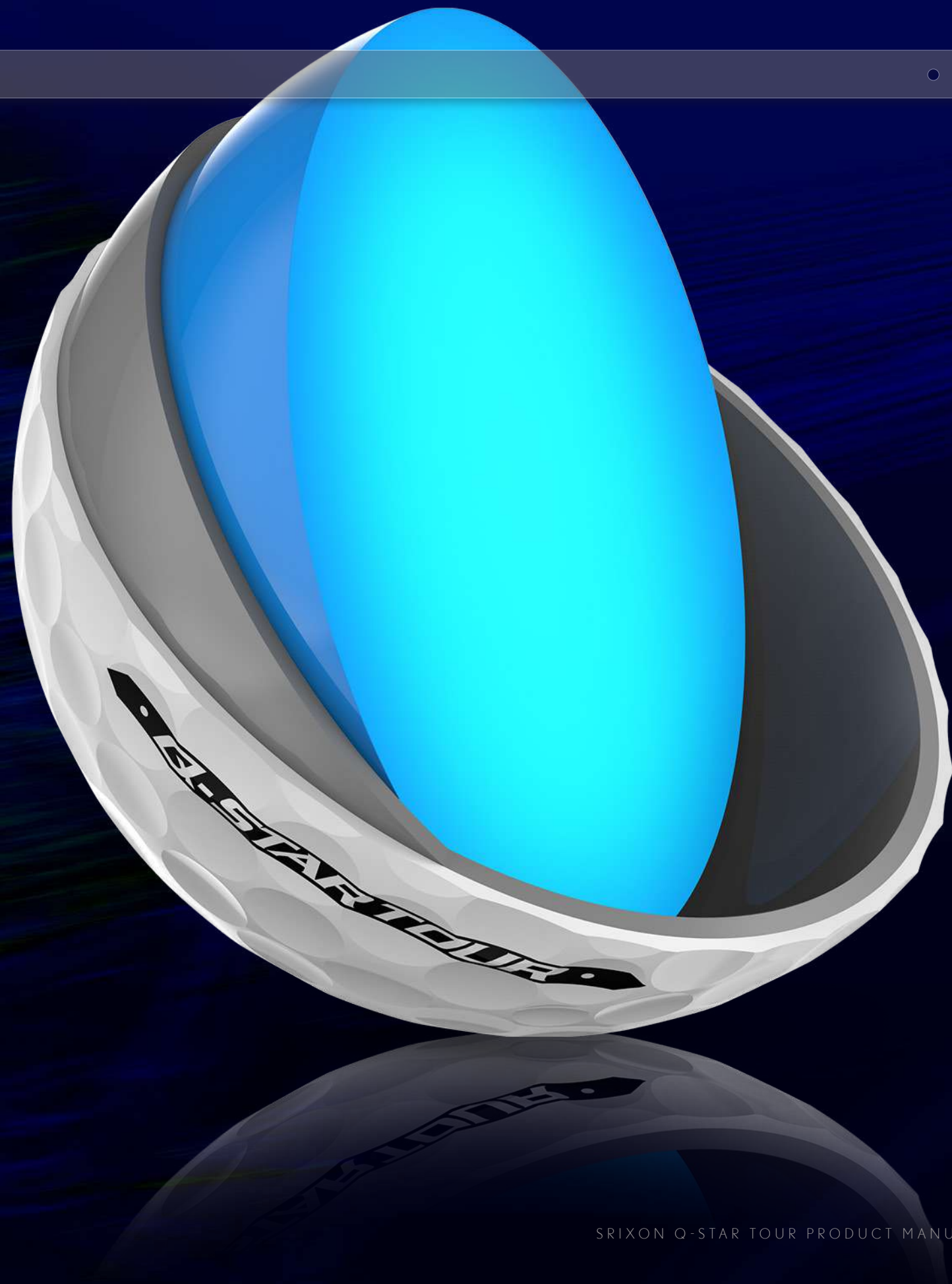


DISTANCE, ACCURACY, AND GREAT FEEL

With its graduated transition from soft inner core to firm outer edge, FastLayer behaves like a core with thousands of layers, giving you distance and softer feel without compromise.

The new Q-STAR TOUR features our softest FastLayer core with tour-caliber performance. That means distance and short game spin like you've always seen on tour, but softer feel than you've ever seen on tour.

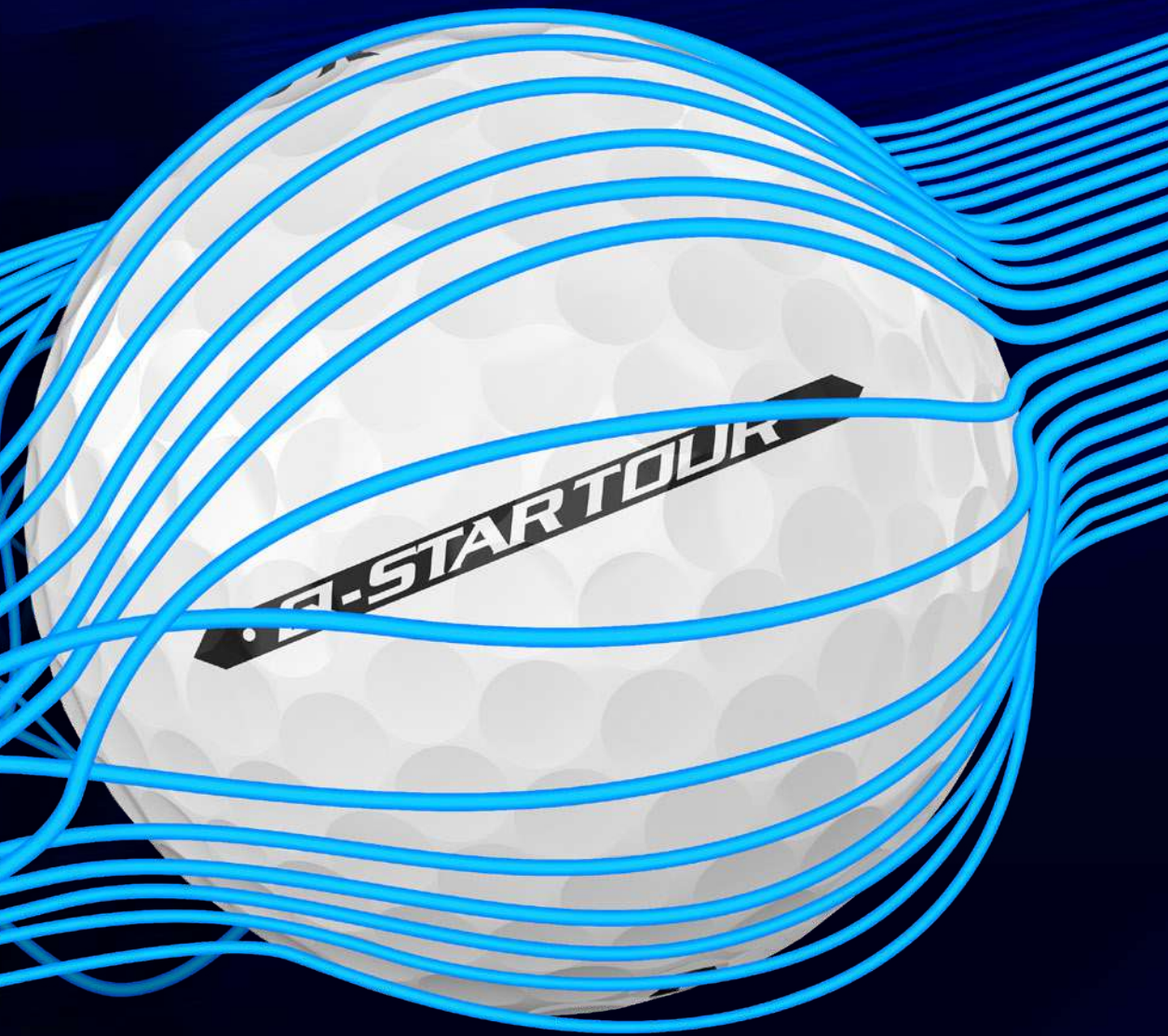
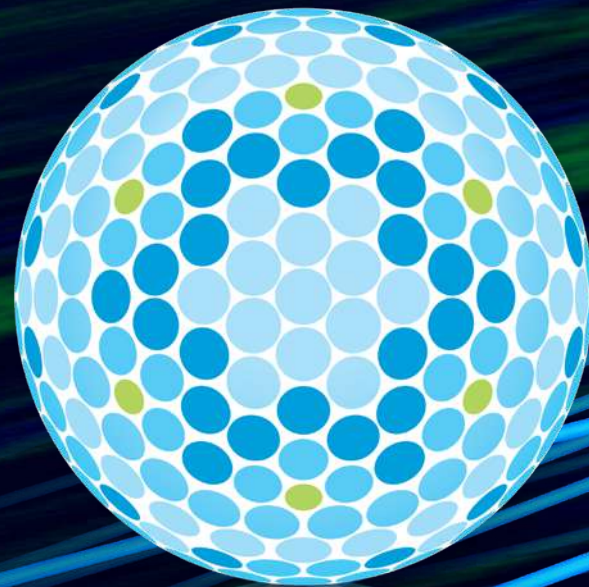
A softer core also dramatically reduces long game sidespin. That means your driver and wood shots fly straighter and stay on target for more accuracy off the tee.



DRAG-DEFYING DIMPLES

338 SPEED DIMPLE PATTERN

The 338 Speed Dimples featured on Q-STAR TOUR improve overall aerodynamics for better flight performance with drivers, woods, and irons. With just the right combination of dimple uniformity and dimple occupancy, the Speed Dimples boost distance and go straight, even in the toughest wind conditions.

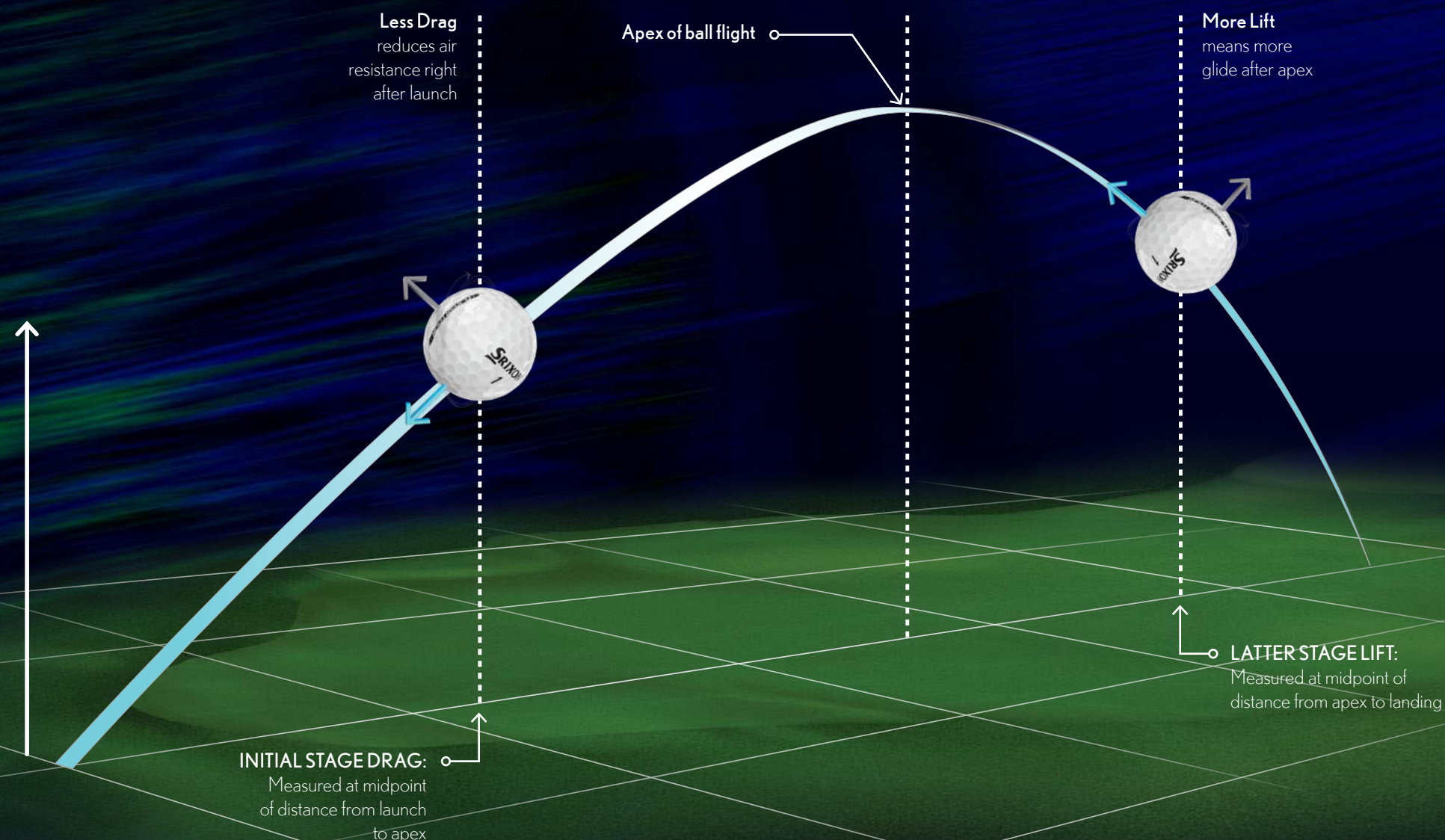


DRAG LESS, GLIDE MORE

Speed Dimples reduce drag and increase lift, creating just the right aerodynamic conditions for maximum flight distance.

A lower drag coefficient means the ball cuts through air with less resistance for more speed and a more penetrating launch. That reduced drag also fights against the wind, so your shots fly straighter in harsh conditions.

A higher lift coefficient pushes up on the ball throughout its decent, slowing its fall and forcing it to stay in the air longer for maximized distance.



Q-STAR TOUR



The new Q-STAR TOUR is our softest ball with tour-level performance. Get tour-caliber spin and distance from its 3-piece construction and urethane cover, along with exceptionally softer feel than traditional tour balls.

FastLayer Core

The FastLayer Core offers distance and soft feel without compromise due to a gradual transition from soft inner core to firm outer edge.

Spin Skin with SeRM

A urethane coating with flexible molecular bonds digs deep into wedge and iron grooves for increased friction and maximum spin.

New Alignment Aid

New longer side stamp helps align those critical putts.

338 Speed Dimple Pattern

Providing a penetrating ball flight in all conditions, the optimal dimple design increases lift and reduces drag to maximize distance.

Swing Speed:

75+ MPH

Launch:

Mid-High

Greenside Spin:

High

SPECS

Construction	3PC
Cover Material	Urethane
Cover Thickness	.5mm
Compression	72
Dimple Number	338

Available in both Pure White and Tour Yellow.

